



Beth 18 & Boat Emerald Quay | | Shoreham-By-Sea | BN43

5 10





## Beth 18 & Boat Emerald Quay | | Shoreham-By-Sea | BN43 5JS

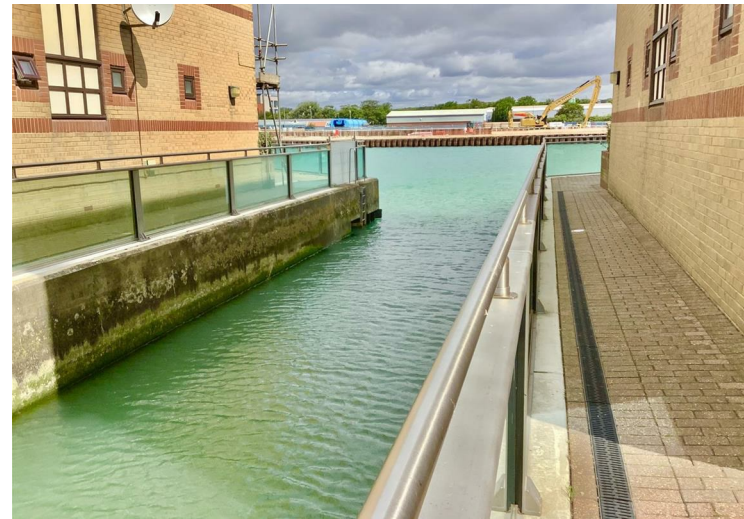
£30,000

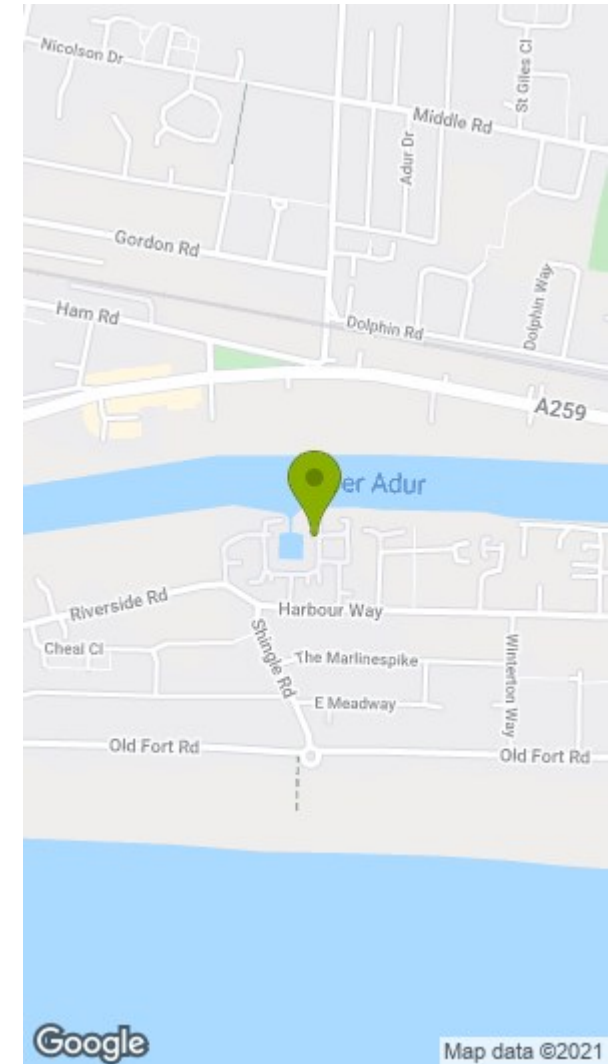
\*\*\* £30,000 \*\*\*

WARWICK BAKER ESTATE AGENTS ARE DELIGHTED TO MARKET THIS WW11 BOAT, A PINNACE GIG, CUTHBERT, OF THE MAILLE-BREZE, A LARGE DESTROYER BUILT IN 1931.

THIS DOES INCLUDE MOORING

PLEASE CALL FOR MORE DETAILS - 01273 461144





**Disclaimer**

\* These particulars are intended to give a fair and substantially correct overall description for the guidance of intending purchasers and do not constitute an offer or part of a contract. Prospective purchasers and/or lessees ought to seek their own independent professional advice.

\* All descriptions, dimensions, areas, references to condition and necessary permissions for use and occupation and other details are given in good faith and are believed to be correct, but any intending purchasers should not rely on them as statements or representations of fact, but must satisfy themselves by inspection or otherwise as to the correctness of each of them.

\* All measurements are approximate

Energy Efficiency Rating		Environmental Impact (CO <sub>2</sub> ) Rating			
	Current	Potential		Current	Potential
Very energy efficient - lower running costs			Very environmentally friendly - lower CO <sub>2</sub> emissions		
(92 plus) <b>A</b>			(92 plus) <b>A</b>		
(81-91) <b>B</b>			(81-91) <b>B</b>		
(69-80) <b>C</b>			(69-80) <b>C</b>		
(55-68) <b>D</b>			(55-68) <b>D</b>		
(39-54) <b>E</b>			(39-54) <b>E</b>		
(21-38) <b>F</b>			(21-38) <b>F</b>		
(1-20) <b>G</b>			(1-20) <b>G</b>		
Not energy efficient - higher running costs			Not environmentally friendly - higher CO <sub>2</sub> emissions		
<b>England &amp; Wales</b>	EU Directive 2002/91/EC		<b>England &amp; Wales</b>	EU Directive 2002/91/EC	